

**INFORMATION TO BE PUBLISHED
UNDER SECTION IV (1) (b) OF THE RIGHT TO INFORMATION ACT 2005**



THE DIRECTORATE TREASURIES AND ACCOUNTS

DIRECTORATE OF TREASURIES & ACCOUNTS

MANUAL-I

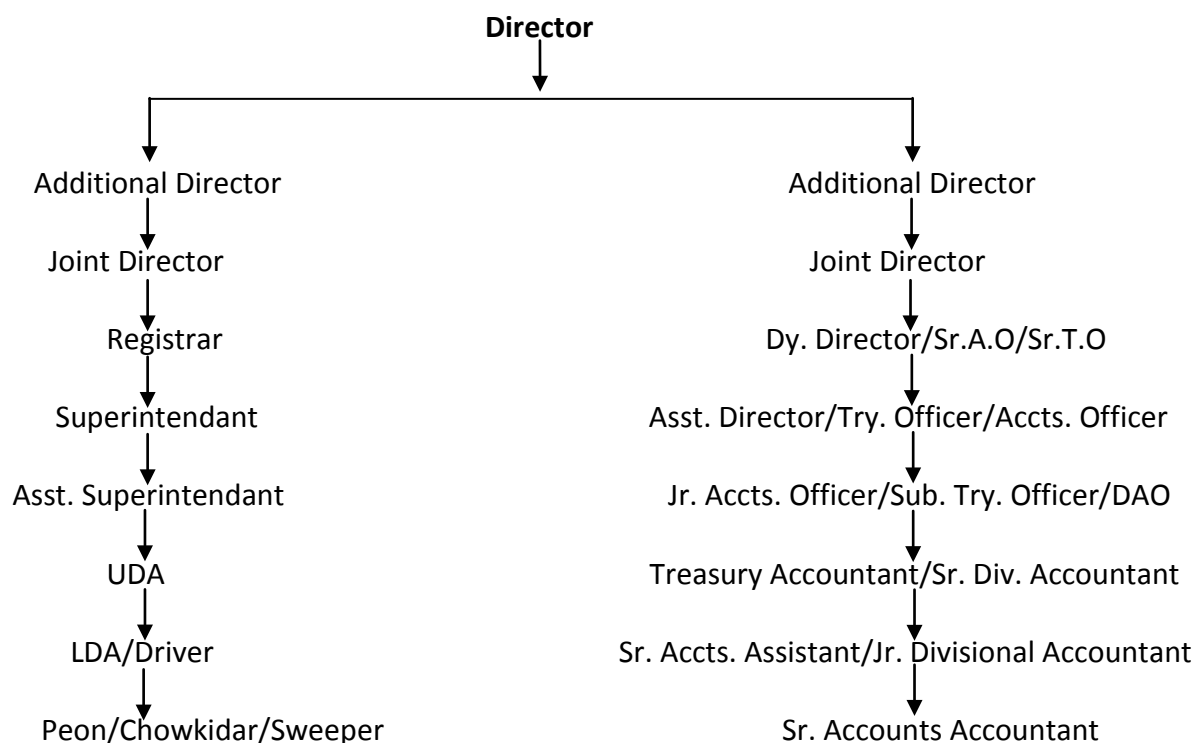
(i). (a) Organisation:

The Department of Treasuries & Accounts was established in the year 1980 with 8 District Treasuries and 2 Sub-Treasuries. These subsequently increased to 11 District Treasuries and 12 Sub-Treasuries. The main objective of setting up of Treasuries and Sub-Treasuries is to provide the people of the State the facility of Government transactions through Treasuries at their doorsteps, and to also ensure financial discipline and control.

During the initial period prior to establishment of the department, the Treasuries functioned under the Deputy Commissioners until the department was carved out into a new department in 1980. The department was initially set up with staff drawn from various organisations such as Accountant General's Office, Auditors from Nagaland State Transport and Accountants from Works Divisions whose services were absorbed into the department.

The Department of Treasuries & Accounts is headed by the Director with supporting structure consisting of two Additional Directors, three Joint Directors and two Assistant Directors. The directorate has three Superintendents and four Assistant Superintendents who work under the supervision of one Registrar with supporting clerical and Grade-IV staff. The directorate is presently located in the New Secretariat Area opposite the Nagaland Civil Secretariat.

Hierarchical Chart of Directorate of Treasuries & Accounts



(b) Functions and duties:

1. Directorate:

The Directorate looks after the overall administration of the department, cadre control of non-gazetted staff, monitoring of expenditure of all departments, monitoring and regulation of expenditure of GPF, authentication of Drawal Authorities/ Drawing Limits, overall supervision of the working of Treasuries and Sub-Treasuries and service matters of all gazetted and non-gazetted staff of the department. It also carries out pre-audit of all Arrear bills, MR bills, leave encashment of all departments and issue of pay slips which the Accountant General does not do, etc. The department also carries out assessment and compilation of revenue realization under all revenue heads of accounts based on reports received from the Treasuries and Sub-Treasuries.

The directorate has five working sections namely,

- (a) **Establishment-I** for the Directorate;
- (b) **Establishment-II** for Work Accounts;
- (c) **Establishment-III** for Audit Wing and Training Wing;
- (d) **Monitoring Wing**; and
- (e) **New Pension Scheme**.

The functions and duties of these establishments are briefly discussed below:-

(a) Establishment-I:

The Branch is headed by one Superintendent, who is assisted by an Assistant Superintendent and Office Assistants. They deal with the establishment matters of the directorate and also with the subordinate offices of the Treasuries. The Assistants initiate the files and pass them to the Superintendent. The Superintendent will further pass the file to the Registrar who will endorse the files to the concerned higher officers for comments and further scrutiny. The file moves through the Joint Director and Additional Director and lastly to the Director for decision and ultimate disposal of the files.

(b) Establishment (ii):

This Section deals with the establishment matters of the accounts personnel such as Divisional Accounts Officer, Senior Divisional Accountants and Junior Divisional Accountants deployed in various work divisions that is, cheque drawing departments. These accounts personnel are deployed in the Works Divisions to help the Division in rendering monthly accounts to the Accountant General's Office and preparation of budget as well. Files are processed in the same manner as above.

(c) Establishment (iil):

Internal Audit Wing:

The Internal Audit Wing of the Directorate of Treasuries & Accounts comprises of three (3) teams. Each team consists of one Audit Officer and four Auditors or Assistant Auditors. These teams conduct internal audit of the State Government departments including non- governmental bodies that receive grants from the Government. Through internal audit these teams bring financial irregularities to the notice of the Government. In the process of audit they also tender financial advice to the departments. For effective supervision of the Audit Wing the section is headed by one Joint Director.

Training Wing:

The Departmental Training Institute is located at Purana Bazar, Dimapur. It was established during February 2005. The Institute has now become fully functional and is well equipped for imparting training to in-service officers of the department as well as new recruits to the service who are required to undergo training for one year in matters relating to accounts and audit as well as other financial matters.

The Institute has so far conducted training in the following courses:-

1. One year induction Training for NPSC recruited JAO/STO.
2. One year induction Training for NPSC recruited Junior Divisional Accountants.
3. One year induction Training for NPSC recruited Junior Account Assistants.
4. Skill up gradation Training course for in service officers of Treasuries & Accounts Department.
5. Skill up gradation for in service Non-gazetted official of Treasuries & Accounts.
6. Crash course trainings for Assistants of Education Department.
7. Crash course for Assistants of the directorates located at Dimapur.

The Training wing is manned by one Adviser, one Joint Director, one Assistant Director and two Lecturers on fixed pay basis.

(d) Monitoring Wing:

The Monitoring section of the Directorate of Treasuries & Accounts monitors the DDO-wise expenditure of all the departments on the basis of monthly monitoring reports submitted by the various Treasuries and Sub-Treasuries. These reports are checked and compiled in the directorate and submitted to the Finance Department. The reports serve as an important tool in monitoring and control of Government expenditure. In addition to the above assignments the following works of the department are also entrusted to this section:-

1. Authentication of the department-wise Drawal Authority/Drawing Limit issued by the Finance Department.
2. Authentication of Drawal Authorities for payment of GPF and sanction of scholarships and stipends issued by the head of the departments.
3. Pre-audit of MR bills, Leave encashment bills and arrears of pay presented by various departments for payment.
4. Circulation of DDO-wise sub-allotment of all departments to Treasuries and Sub-Treasuries.

The monitoring section is manned by two Joint Directors one Assistant Director and four Junior Accounts Officers including Senior Accounts Assistants.

(e) New Pension Scheme:

With the introduction of the New Pension Scheme by the State Government, the department has set up a new section headed by an Assistant Director. He is assisted by Junior Accounts Assistants and ministerial staff to maintain proper records and accounts of the subscription of the Government employees falling under the New Pension Scheme.

The directorate maintains the records of the contributions made by the subscribers and the matching grants given by the Government. It also acts as DDO for the subscribers on withdrawal from the scheme, as the amount to be paid to the subscriber will be credited to the account of the directorate who will in turn withdraw the amount and pay it to the subscriber/nominee.

In addition to these branches, the directorate also looks after related matters that are briefly elaborated below:-

(a) Civil Accounts:

The Department of Treasuries & Accounts supervises the functioning of its officers who are designated as Senior Accounts Officers/Accounts Officers/Junior Accounts Officers and are posted to the various directorates to guide and assist the Heads of Departments in all financial matters including response to audit paras, draft paras and C&AG reports. They also conduct internal audit of the subordinate offices of their respective directorates and help the department in preparation of budget and tender advice to the Head of the Department in financial matters.

(b) Treasuries and Sub-Treasuries:

All the State Government transactions are carried out through the Treasuries and Sub-Treasuries that are under the control and supervision of the Directorate of Treasuries and Accounts. The Treasuries also make all payments of pensions. The Treasuries monitor whatever is presented by the DDO's and the expenditure incurred from there are compiled and submitted to the Accountant General Office on a monthly basis. The Treasuries and Sub-Treasuries also compile the accounts and submit them to directorate which in turn compiles them in a consolidated manner and submit them to the Finance Department.

The District Treasuries also maintain strong rooms where all confidential documents and valuables of the Government are stored. The Treasuries also issue non-postal stamps to the stamp vendors.

MANUAL-II:

(ii) Powers & duties of Officers and Employees:

1. The Director exercises powers and duties of the Head of Department as per the provisions of the Delegation of Financial & Cognate Powers of the Government of Nagaland, 1964, as amended from time to time, including administrative orders and instructions issued by the Government from time to time. The officers below the Director have not been delegated any powers as per existing scheme of functioning. Their main duty is to assist the Director in decision making and disposal of references. The Grade-III employees are keepers of files and records. They do all initial works in preparation of files and submit them to higher level for disposal.

2. The Treasury Officers/Sub-Treasury Officers function as watch dogs and ensure the regularity of bills, and have powers to pass the bills within the provision of the Central Treasury Rules and observance of all other codal formalities and instructions issued by the Government

from time to time. There are altogether 960 DDOs in the State. The Treasury Officers/Sub-Treasury Officers are responsible for monitoring the fund provisions sub-allotted to each DDO. The transactions that take place in the Treasuries/Sub-Treasuries compiled and submitted to the directorate each month for monitoring of all transactions. These monthly accounts are also compiled and submitted to the Accountant General, Nagaland.

3. The Accounts Personnel in the Works Divisions have been vested with the responsibility of checking and scrutinizing bills in the Divisions and to offer their comments as per financial rules and regulations. They are responsible for proper maintenance of accounts, and guide the Divisions to follow the prescribed financial norms. They compile all the transactions of the Divisions and submit the monthly accounts to the Accountant General under the signature of the Executive Engineer.

4. The Audit Team visits Government Offices/Autonomous Bodies for internal audit and have the power to requisition records that they may deem fit for the purpose of Internal Audit. In course of Internal Audit they not only point out the defects and financial irregularities but also render immense financial advice to the concerned office for future guidance. They are responsible for following up their findings to ensure that the departments rectify the objections raised and implement the recommendations in letter and spirit.

5. The Joint Director in charge of the Training Institute has the power to draw up the Training Schedules for in-service Government employees for each calendar year with the approval of the Director and implement it. He supervises the imparting of quality training. On completion of the training, he issues certificates to all the trainees for recording in their service book.

6. The officers at the lower levels including the ministerial staff are responsible for preparation of files and scrutiny of records, documents and reports for submission to the higher authorities for decision making.

MANUAL-III:

(iii) The procedures followed in the decision making process, including channel of supervision and accountability:

The department takes decisions based on the Government orders, notifications and instructions and guidelines as well as based on the relevant data and information received from the Subordinate offices on need basis. There are other factors that affect decision making such as the conduct and behavior of the employees, contingency, circumstances etc. Once orders are issued the directorate is to see that they are properly implemented or carried out by Subordinate Officers. No doubt each level of staff plays a very important and responsible role in the time bound frame works, particularly in the Treasury &Accounts Department and their service is indispensable to the Government because of their dealings in financial matters. They initiate file movement and check the correctness of the figure and give proper comment which feed the higher authority in taking decision making.

MANUAL-IV:

(iv) The norms set by it for discharge of its functions:

The discharge of duties and functions of each office under the Directorate of Treasuries and Accounts is guided by norms and procedures that are set for all the Government Departments i.e., the administrative procedures and financial rules and regulations prescribed.

Each of the job performed by the individuals cannot be described in details; unlike many other Departments, the Officers and staff working in the Treasury Department have to perform their duties even beyond Office hours (the prescribe timing of the Government) The Officers and staff have to forego even leaves and holidays in order to attend to urgent requirement.

As of now in order to maintain confidential matters the PA to Director has been entrusted with the works and he is doing it. In order to speed up the file which are of urgent nature are personally attended by either Officer or Assistant concern till the matter is settled.

MANUAL-V:

(v) The rules, regulations, instructions, manuals and records held by it or under its control or used by its employees for discharge of its functions:

The Central Treasury Rules, the Geneneral Financial Rules, the Nagaland Treasuries, Accounts, Audit Service Rules 2002, and guidelines and instructions issued by the Government from time to time.

In addition to already exist frame rules particularly, concerning Accounts matters and Treasury, the Department of Treasury & Accounts is cover with Service Rule, Revision of Pay which determine the pension matters, code of Conduct Rules, Vats which is also actually implementing in the Treasury and CPWD Account code etc

MANUAL-VI:

(vi) A statement of the categories of documents that are held by it or under its control:

The Department maintains records of Service Books, Personal Files of Employees, Stock Registers, Attendance Registers, GPF Accounts for Group-"D" employees, Monitoring Registers, Authentication and Pre-Audit Registers at the Directorate level. Security Deposit Register of deductions made from Contractors bills, Revenue Receipt Register, Stamps, Cheque Books, Gazetted Salary Register, and Form No.s TA-2, TA-3, TA-36, TA-37 and TR-4 are maintained at the District level. In general, documents are classified as 'Secret', 'Confidential' and 'Routine'. The Department executes it functions on the strength charter of duties.

MANUAL-VII:

(vii) The particulars of any arrangement that exists for consultation with, or representation, by the members of the public in relation to the formulation of its policy or implementation thereof:

The Department in the Directorate level does not take policy decisions but implements the policy decisions and directions of the Government. Accordingly, there is no consultative process with the public.

MANUAL-VIII:

(viii) A statement of the boards, councils, committees, and other bodies consisting of two or more persons constituted as its part or for the purpose of its advice, and as to whether meetings of those boards, councils, committees and other bodies are open to the public, or the minutes of such meetings are accessible for public:

Departmental Recruitment Committees and Departmental Promotion Committees constituted as per Government guidelines/instructions. Though proceedings of these Committees are not open to the public, the minutes of meetings of the Committees are accessible to the public under the provisions of the Right to Information Act, 2005.

The Department has two set up of Departmental Promotion committee one for Gazetted Officer and one for Non Gazetted Government servants.

The DPC for gazetted officers consist of the following members:

- | | |
|-----------------------------------|----------|
| 1. Chairman, NPSC | Chairman |
| 2. One member NPSC | Member |
| 3. Chief Secretary, Nagaland | - do- |
| 4. Commissioner & Secretary P&AR | - do- |
| 5. Secretary, Finance Departmen | -do- |
| 6. Director Treasuries & Accounts | - do – |

The DPC for regularisation of Adhoc or officiating appointment are done at the Directorate level with the committee comprised of members from the following members;-

- | | |
|-----------------------------------|------------------|
| 1. Director (T & A) | Chairman |
| 2. Jt Director -do- | Member |
| 3. Under Secretary Finance Deptt. | – do – |
| 4. Under Secretary P & AR | - do – |
| 5. Dy Deputy Director (T&A) | Member Secretary |

There has no tenure to this committee except sit once or twice and settled the matter and it stand as good as dissolved.

MANUAL-IX

(ix) A directory of its officers and employees:

Given in Annexure-I and Annexure-II enclosed.

Annexure-I

Directory of the officers

Sl. No.	Name	Designation	Telephone Numbers	
(1)	(2)	(3)	(4)	
1	Shri Z. Mesen	Director	0370-2222283	943634280
2	Shri K. Tiayanger	Additional Director		9436435129
3	Shri P.M. Jami	Additional Director		9436001662
4	Shri L. N. Konyak	Joint Director		9436015089
5	Shri Vesatso Tetseo	Joint Director		9402815997
6	Shri. Zhekheto Zhimomi	Joint Director		
7	Shri Aochuba	Assistant. Director		9436408430
8	Shri K. Wati Tzudir	P.A. to Director		9856233059
9	Shri Pushuzo	Registrar		9436604841
10	Shri Vitsulie	Accounts officer		9856131737
11	Shri Vechiso	Assistant Director		9436005808
12	Shri Pusuho Theluo	Audit officer		9856141776
13	Shri P.R. Rana	Superintendent		9426010106
14	Smti. Delievinuo	Superintendent		9436604840
15	Smti. Sashinaro	Superintendent		9856131201

List of Treasuries and Sub-Treasuries

Sl No.	Name of Try/Sub-Treasury	District under	Remark	Contact No.	Mobile No.
(1)	(2)	(3)	(4)	(5)	(6)
1.	Kohima (N) Treasury	Kohima		0370-2290339	9436001538
2.	Kohima (S) Treasury	Kohima		0370-2222720	9402815997
3.	Dimapur Treasury	Dimapur		03862-226393	9436002332
4.	Mokokchung Treasury	Mokokchung		0369-2226303	9436004185
5.	Tuensang Treasury	Tuensang		03861-220229	
6.	Mon Treasury	Mon		03869-221223	
7.	Zunheboto Treasury	Zunheboto		03867-220236	9436001502
8.	Wokha Treasury	Wokha		03860-222058	9436001979
9.	Phek Treasury	Phek		03865-223044	9436200026
10.	Kiphire Treasury	Kiphire		03863-222563	9436001147
11.	Peren Treasury	Peren		03869-231224	9436263625
12.	Longleng Treasury	Longleng		03869-236313	9436007038
13.	Aboi Sub- Treasury	Phek			9436209013
14.	Changtonya Treasury	Kohima		0369-263301	9436017551
15.	Chazuba Treasury	Phek		03865-63162	
16.	Tseminyu Sub-Treasury	Kohima		0370-235138	9436435926

17.	Pfustero Treasury	Phek	Under suspension and attached with Phek Treasury
18.	Mangkolemba Sub-Try.	Mokokchung	Under suspension and attached with Mokokchung Treasury
19.	Baghty Sub-Try	Wokha	Under suspension and attached with Wokha Treasury
20.	Aghunato Sub-Try.	Zunheboto	Under suspension and attached with Zunheboto Treasury
21.	Akuluto Sub-Try.	Zunheboto	Awaiting R.B.I. approval for establishment currency chest
22.	Tobu Sub-Try.	Mon	-do-
23.	Naginimora Sub-Try.	Mon	-do-

MANUAL-X

(x). The monthly remuneration received by each of its officers and employees, including the system of compensation as provided in its regulations.

Enclosed in Annexure-II below.

Annexure-II

SL No.	Name	Designation	Pay Band	Grade Pay	Basic Pay
(1)	(2)	(3)	(4)	(5)	(6)
1	Shri. Z. Mesen	Director	37400-67000	8900	46300
2	Shri. K. Tiayanger Tzudir	Addl. Director	15600-39100	8700	40670
3	Shri P.M. Jami	Addl. Director	15600-39100	8700	38410
4	Shri. L.N. Konyak	Joint Director	15600-39100	7600	38410
5	Shri. Vesatso Tetseo	Joint Director	15600-39100	7600	37290
6	Shri. Zhekheto Zhimomi	Joint Director	15600-39100	7600	37280
7	Shri. Aochuba	Asst. Director	15600-39100	5700	23530
8	Shri Vechiso	Assistant Director	15600-39100	5700	23530
9	Shri. Nungsungwati	Steno Grade-I	15600-39100	5700	31790
10	Shri. Pushuzo	Registrar	15600-39100	5700	29670
11	Smti. Dielievino	Superintendent	15600-39100	5400	26660
12	Shri. P.R. Rana	Superintendent	15600-39100	5400	24410
14	Smti. Sashinaro	Superintendent	15600-39100	5400	18700
15	Shri. Vitsulie	Accounts Officer	9300-34800	4600	21500
16	Shri. Pusuhü Theluo	Audit Officer	9300-34800	4600	20290
17	Shri.Hukato V. Yepthomi	Sr. D.A.	9300-34800	4200	17810
18	Shri. Arijj Lokho	Steno Grade-II	9300-34800	4200	18430
19	Shri. Kelhouvikho Chase	JDA	9300-34800	4200	18740
20	Shri. B.Takum Chumukam	JDA	5200-20200	2800	12490
21	Shri. Kününgoyi Theluo	JDA	5200-20200	2800	13590
22	Shri Asungba Yaden	JDA	5200-20200	2800	12490

23	Shri W.Chatyan	JDA	5200-20200	2800	12490
24	Shri. Noken Lam	JDA	5200-20200	2800	12490
25	Shri R. Aotongpang	JDA	5200-20200	2800	12490
26	Shri M. Kichung Phom	JDA	5200-20200	2800	12490
27	Shri.K.Bendang Moa Yim	JDA	5200-20200	2800	12220
28	Shri.Moses Rose	JDA(C/B)	5200-20200	2800	6750
29	Shri. Aoyanger	JDA(C/B)	5200-20200	2800	6750
30	Smti. Neikezenuo	J.A.A	5200-20200	2000	8710
31	Smti. Moasangla	J.A.A	5200-20200	2000	9160
32	Shri. Taliangshi	Asstt. Supdt	9300-34800	4400	19310
33	Shri. Medovi	Asstt. Supdt	9300-34800	4400	18770
34	Smti. Limatula	Asstt. Supdt	9300-34800	4400	18500
35	Shri. Salzü Neikha	UDA	5200-20200	2800	17320
36	Smti. Loyivani	UDA	5200-20200	2800	15210
37	Smti. Ruokuotuonuo	UDA	5200-20200	2800	14960
38	Smti. Zemotuonuo	UDA	5200-20200	2800	14690
39	Smti. Tovily Yepthomi	Sr. A.A.	9300-34800	4200	19500
40	Smti. Rongsentemjen	UDA	5200-20200	2800	14170
41	Smti. Ghokali	UDA	5200-20200	2800	13640
42	Shri. B. Alemba	UDA	5200-20200	2800	14420
43	Smti. Ruovilie-ü	UDA	5200-20200	2000	13910
44	Smti. Meyisenla	LDA	5200-20200	2000	10220
45	Smti. Avono	LDA	5200-20200	2000	12340
46	Shri. Ajangto	UDA	5200-20200	2000	13010
47	Smti. Merentila	LDA	5200-20200	2000	9330
48	Shri. T.Akumlong Ao	LDA	5200-20200	2000	8200
49	Shri. S. Chichamo Odyuo	LDA	5200-20200	2000	8200
50	Shri. Longngam Konyak	LDA	5200-20200	2000	8200
51	Smti Petekhrienuo Rio	LDA	5200-20200	2000	7960
52	Shri Kelhousithie Mere	LDA	5200-20200	2000	7960
53	Smti. Meyajungla	LDA	5200-20200	2000	7960
54	Mr.C.Imnatoshi Longchar	JAA	5200-20200	2000	8200
55	Shri Tohoto K. Chishi	JAA	5200-20200	2000	8200
56	Moanungsang Jamir	JAA	5200-20200	2000	8200
57	Shri Tezenchu Semy	JAA	5200-20200	2000	8200
58	Smri. Merentula	JAA	5200-20200	2000	7960
59	Shri. Vizotuolie Kuotsu	JAA	5200-20200	2000	7960
60	Shri. Kakiho G. Chishi	JAA	5200-20200	2000	7960
61	Smti. Neikolou Therie	JAA	5200-20200	2000	7960
62	Smti. Sangjenkala	Typist-II	5200-20200	2000	11190
63	Smti. A. Pangton	Typist- Gr- 1	5200-20200	2000	11560
64	Smti. Sentipokla	Steno-II	5200-20200	2600	14660
65	Shri. Sofuru	Store keeper	5200-20200	1900	11780
66	Smti. Vakrale	Typist-I	5200-20200	1900	11780
67	Smti. Akangkokla	Typist-III	5200-20200	1900	10280
68	Smti. Seno Ngone	Typist-III	5200-20200	1900	9180
69	Shri. Imnamayang	Head Driver	5200-20200	2600	15200
70	Shri. Pawan Subha	Driver Grade-I	5200-20200	2600	14680

71	Shri. Tokiho	Driver Grade-I	5200-20200	2400	14260
72	Shri. Viekrul	Driver Grade-I	5200-20200	2400	13200
73	Shri. Kilentemsü	Driver Grade-I	5200-20200	2400	13200
74	Shri. Saran Kumar	Driver Grade-I	5200-20200	2400	13200
75	Shri. Yampothung	Driver Grade-I	5200-20200	2400	12980
76	Shri. Imlijungba	Driver Grade-I	5200-20200	2400	12980
77	Shri. Lanutemsu	Fixed	-		3000
78	Shri. Diekuovi	Driver Grade-I	5200-20200	2400	12340
79	Shri. Punameren	Driver Grade-I	5200-20200	2400	11100
80	Shri. Odiyanger	Driver	5200-20200	1800	8540
81	Shri. Luovilie	Record Keeper	5200-20200	1800	10640
82	Shri. Neivicha	Auditor	9300-34800	4200	19620
83	Shri. Micheal Neikha	Auditor	9300-34800	4200	18990
84	Shri. Tongpang	Auditor	9300-34800	4200	17050
85	Shri. Thungchamo	Auditor	9300-34800	4200	14420
86	Shri. Lhoubeizotuo	Auditor	9300-34800	4200	18060
87	Shri. Imlisashi	Auditor	9300-34800	4200	13920
88	Shri. Kiviho Kinny	Auditor	9300-34800	4200	18060
89	Shri. Rongsentemjen	Asstt. Auditor	5200-20200	2800	12590
90	Shri. Vevolhü Dozo	Asstt. Auditor	5200-20200	2800	18060
91	Shri. Zubenthung Murry	Asstt. Auditor	9300-34800	4200	10275
92	Shri. Vikiqhe	Asstt. Auditor	5200-20200	2800	13370
93	Shri. Vezopra Vero	Asstt. Auditor	5200-20200	2800	13120
94	Shri. Tangmong	Asstt. Auditor	5200-20200	2800	13120
95	Shri. Lanukumzuk	Asstt. Auditor	5200-20200	2800	13120
96	Smti. Ajungla longchar	Asstt. Auditor	5200-20200	2800	11170
97	Shri. Kevi Angami	Asstt. Auditor	5200-20200	2800	11170
98	Shri. Khrietouzo Khiemiao	Asstt. Auditor	5200-20200	2800	11470
99	Smti. Khriezovole	Peon	5200-20200	1800	9860
100	Shri. Thungasao	Peon	5200-20200	1800	9860
101	Shri. Mhonbemo	Peon	5200-20200	1800	9710
102	Shri. Bendangkumzuk	Peon	5200-20200	1800	9710
103	Shri. Lesü	Peon	5200-20200	1800	9860
104	Shri. Mon Bahadur	Peon	5200-20200	1800	9860
105	Shri. Keduolhoubeilie	Peon	5200-20200	1800	9710
106	Smti. Chiam	Sweeper	5200-20200	1800	9860
107	Shri. Laphyuo	Peon	4400-17200	1400	8700
108	Shri. Solengol	Chowkidar	4400-17200	1400	8470
109	Smti. Lobeni	Peon	4400-17200	1400	6830
110	Smti. Mestivino	Typist	5200-20200	2000	9180
111	Smti. Limawatila	Typist(Fixed)			3500
112	Smti. Viravono	Typist(Fixed)			3500
113	Smti. Sara	LDA(Fixed)			3500
114	Smti. Neikolu	JAA(Fixed)			3500
115	Shri. Lipoktemjen	Driver(Fixed)			3000
116	Shri. Hukato Awomi	Driver(Fixed)			3000
117	Shri. Lhiwetso	Driver(Fixed)			3000
118	Aita Bahadur	Driver(Fixed)			3000

119	Shri. Raj Ballal Sinha	Driver(Fixed)			3000
120	Shri Chubanungdang	Bus Driver (F)			3000
121	Shri Meren Longkumer	Bus Conductor(F)			3000
122	Shri Alem	Driver (Fixed)			3000
123	Shri Gopal Mondal	Driver (Fixed)			3000
124	Smti. Shekholu	Sweeper(Fixed)			2000
125	Shri. Vitouzo	Peon	4400-17200	1300	6240

NAME OF OFFICE : KOHIMA NORTH TREASURY

SI No.	Name	Designation	Pay Band	Grade Pay	Basic Pay
(1)	(2)	(3)	(4)	(5)	(6)
1.	Shri Ajung Amer	T.O.	15600-39000	5700	31140
2.	Shri S.T. Doungel	T.O.	15600-39000	4800	23840
3	Shri. Lothak Giri	S.T.O	9300-34800	4200	19720
4	Mr. Khushehü	Accountant	9300-34800/-	4400	17760
5	Mr.Solhilo Chiero	S.A.A.	5200-20200	2800	17570
6	Shri. P.R. Lotha	S.A.A.	5200-20200	2800	17570
7	Akala	S.A.A.	5200-20200	2800	17310
8	M. Sanso	S.A.A.	5200-20200	2800	17310
9	Shri. Neipe Venuh	S.A.A.	5200-20200	2800	16510
10	Lahoto	S.A.A.	5200-20200	2800	15730
11	Rusaneyi	S.A.A.	5200-20200	2800	16510
12	Vike	S.A.A.	5200-20200	2800	15730
13	Soseyi	S.A.A.	5200-20200	2800	14960
14	Zevitono	S.A.A.	5200-20200	2800	14960
15	Talikala	J.A.A.	5200-20200	2000	14130
16	Smti. Imsusenla	J.A.A.	5200-20200	2000	12540
17	Kutoli	J.A.A.	5200-20200	2000	12360
18	Neisalie	J.A.A.	5200-20200	2000	10580
19	Khrienuo	J.A.A.	5200-20200	2000	10580
20	Seyiesetuonuo	J.A.A.	5200-20200	2000	9869
21	Smti. Neichulo-u	J.A.A.	5200-20200	2000	9330
22	Smti. Kesile-u	J.A.A.	5200-20200	2000	9330
23	Smti. Neisenuo	J.A.A.	5200-20200	2000	9160
24	Ms. Bendanginla	J.A.A	5200-20200	2000	8200
25	Shri Khrienyuhu Solo	J.A.A	5200-20200	2000	8200
26	Shri. Edongro	J.A.A	5200-20200	2000	7960
27	Shri. Mhonbeni Jami	J.A.A	5200-20200	2000	7960
28	Smti. Alila Jamir	J.A.A	5200-20200	2000	7960
29	Smti. Watisenla	J.A.A	5200-20200	2000	7960
30	Zeluolie	Typist	5200-20200	1900	11430
31	Menuolhoulie	R.K.	5200-20200	1800	10780
32	Shri. Mesezu kapfo	S.A.A.	5200-20200	28000	12490
33	Vesuyi	Duftry	4400-17200	1400	9980

34	Tsolow	Peon	4400-17200	1300	8080
35	Kelhousietuo	Peon	4400-17200	1300	8080
36	Kevilezo	Peon	4400-17200	1300	8080
37	Vimhazo	Peon	4400-17200	1300	8080
38	Smti. Medovino	Peon	4400-17200	1300	8080
39	Zonuo	Sweeper	4400-17200	1300	8080
40	Puhosel	Chowkidar	4400-17200	1300	7340
41	Kelhonguzo	Driver	Fixed Pay		3000

NAME OF OFFICE: KOHIMA (S) TREASURY

Sl No.	Name	Designation	Pay Band	Grade Pay	Basic Pay
(1)	(2)	(3)	(4)	(5)	(6)
1	Smti. Yapangla	Sr. T.O.	15600-39100	7600	38406
2	Mrs. Wekolou	Accountant	9300-34800	4200	14840
3	Smti. Kezhano	Accountant	9300-34800	4200	14840
4	Smti. Yampeni	S.A.A	5200-20200	2800	17050
5	Shri. Duhu	S.A.A	5200-20200	2800	16510
6	Smti. Katoli	S.A.A	5200-20200	2800	16510
7	Smti. Zambemo	S.A.A	5200-20200	2800	16000
8	Smti. Lothungbeni	S.A.A	5200-20200	2800	14960
9	Shri. Imkumzukba	S.A.A	5200-20200	2800	16000
10	Smti. Imtidenla	S.A.A	5200-20200	2800	14420
11	Shri. Krase	S.A.A	5200-20200	2800	14420
12	Shri. Pushe	S.A.A	5200-20200	2800	12540
13	Smti. Neibounuo	J.A.A.	5200-20200	2000	14410
14	Smti. Mezhuvonuo	J.A.A.	5200-20200	2000	12340
15	Smti. Neikedoi	J.A.A.	5200-20200	2000	11280
17	Smti. Limasangla	J.A.A.	5200-20200	2000	9160
19	Smti. Sentila Lkr.	J.A.A.	5200-20200	2000	14960
20	Ms R.N. Aienla Tzudir	J.A.A	5200-20200	2000	8200
21	Shri Nathan Rengma	J.A.A	5200-20200	2000	8200
22	Shri. Avibu Ziephru	J.A.A	5200-20200	2000	7960
23	Shri Medovinuo	J.A.A	5200-20200	2000	7960
24	Smti. Rachel Rudi	J.A.A	5200-20200	2000	7960
25	Smti. Itoli	Typist	5200-20200	1900	10929
26	Shri. Tombok	Driver	5200-20200	2800	10770
27	Shri. Seyievizo	R.K.	5200-20200	1800	11260
28	Shri. Shobemo	Duftry	4400-17200	1400	10320
29	Shri. Khyobemo	Peon	5200-20200	1800	9710
30	Shri. Bendangba	Peon	5200-20200	1800	9710
31	Shri. Kilangmeren	Peon	5200-20200	1800	9570
32	Shri. Saviol	Chowkidar	5200-20200	1800	9710
33	Smti. Thenutalu	Sweeper	5200-20200	1800	9860
34	Shri. Dzusenutuo	Peon	4400-17200	1300	6950
35	Shri. Senokho	J.A.A.	5200-20200	2000	8980

NAME OF OFFICE : MON TREASURY

SI No.	Name	Designation	Pay Band	Grade Pay	Basic Pay
(1)	(2)	(3)	(4)	(5)	(6)
1.	Mr. I. Sosang Jamir	Sr.T.O.	15600-39100/-	5400	24640
2.	Mr.Longphiek	S.T.O.	9300-34800/-	4400	20990
3.	Mr. P.Wangching	S.T.O.	9300-34800/-	4400	20050
4.	Mr. N.CChang	Acctt.	9300-34800/-	4200	17050
5.	Mr. Nyangpong	SAA	9300-34800/-	4200	18480
6.	Mr.Chinglong	SAA	5200-20200/-	2800	14520
7.	Mr. Purtoshi	SAA	5200-20200/-	2800	13110
8.	Mr.Mokoksangba	JAA	5200-20200/-	2000	9750
9	Mr. Wangom	JAA	5200-20200/-	2000	8890
10	Mr.Yangertoshi	JAA	5200-20200/-	2000	8710
11	Mr. N.Esak	LDA	5200-20200/-	2000	8890
12	Mr. Atu Chankija	Potdar	5200-20200/-	1800	10330
13	Mr. W. Okup	R.K.	5200-20200/-	1800	11100
14	Mr. Longtu	Duftry	5200-20200/-	1800	10630
15	Mr, Gopal Dutta	Driver	5200-20200/-	2400	11390
16	Mr. Nyankhing	Sweeper	5200-20200/-	1800	9710
17	MrS. Ngamjen	Peon	5200-20200/-	1800	9420
18	Mr. Langnyei	Chowkidar	5200-20200/-	1800	9570
19	Mr. Chinkup	Peon	5200-20200/-	1800	9420
20	Mr. Pongnyei	Peon	4400-17200/-	1300	7700
21	Mr.Jemhung	Driver	5200-20200/-	1800	8290
22	Mr. Paulai	Peon	4400-17200/-	1300	7580
23	Mr. Lenyei	Peon	4400-17200/-	1300	7580
24	Mr. A. Lame	Peon	4400-17200/-	1300	7580
25	Mr. B. Lame	Chowkidar	4400-17200/-	1300	7580
26	Mr. Pongshen	Peon	4400-17200/-	1300	7580
27	Shri Mosa Konyak	J.A.A	5200-20200	2000	8200
28	Shri. Wangpen	Driver	Fixed Pay		3000

NAME OF OFFICE: ZUNHEBOTO TREASURY

SI No.	Name	Designation	Pay Band	Grade Pay	Basic Pay
(1)	(2)	(3)	(4)	(5)	(6)
1.	Mr. Khevito Sema	Sr.T.O.	15600-39100/-	6600	23590
2.	Mr.K. Ghokhevi Chophi	STO	9300-34800/-	4600	16100
3.	Mrs. Khevili Sumi	STO	9300-34800/-	4600	16100
4.	Mr. Kumar Rai	Acctt.	9300-34800/-	4600	14400
5.	Mr. Heshito	SAA	5200-20200/-	2800	14250
6.	Mr. Kiyeho	SAA	5200-20200/-	2800	14250
7.	Mr. Kahoto	SAA	5200-20200/-	2800	11710
8.	Mrs. Aholi	SAA	5200-20200/-	2800	11240

9.	Mr. Kakheho	JAA	5200-20200/-	2000	10200
10.	Mrs. Easter	JAA	5200-20200/-	2000	7050
11.	MrS. K. Kent	Typist	5200-20200/-	2000	9430
12.	Mr. Nramo	R.K.	5200-20200/-	2000	9100
13.	Mr. Hetovi	Driver	5200-20200/-	2000	10970
14.	Mr. Bohoto Sema	JAA	5200-20200/-	2000	8260
15.	Mr. Tohoi	Potdar	5200-20200/-	2000	7860
16.	Mr. Mito J. Yeptho	JAA	5200-20200/-	2000	6140
17.	Mr. Phuhozhe	Duftry	4400-17200/-	1400	7220
18.	Mr. Lhokishe	Sweeper	4400-17200/-	1400	8160
19.	Mr. Tohoshe	Chowkidar	4400-17200/-	1400	7080
20.	Mr. Aketo	Peon	4400-17200/-	1400	5600
21.	Mr. Hotolu	Peon	4400-17200/-	1400	5690
22.	Mr. Hito	Peon	4400-17200/-	1400	5570
23.	Mr. Zhekuto	Peon	4400-17200/-	1400	5940
24.	Mr. Shinito	Peon	4400-17200/-	1400	5940
25.	Mr. Kughato	JAA	5200-20200/-	2000	9850
26.	Mr. Zhevito	JAA	5200-20200/-	2000	11170
27.	Shri. Mito J. Yepthomi	J.A.A.	5200-20200	2000	7960
28.	Shri. Katovi Chishi	J.A.A.	5200-20200	2000	7960

NAME OF OFFICE: DIMAPUR TREASURY

SI No.	Name	Designation	Pay Band	Grade Pay	Basic Pay
(1)	(2)	(3)	(4)	(5)	(6)
1.	Mr. H. Hoshito Sema	Sr.T.O.	15600-39100/-	6600	21170
2.	Mr. A. Molung Ao	STO	9300-34800/-	4600	16060
3.	Mrs. Litingchemla	Acctt	9300-34800/-	4200	14840
4.	Mr. Talikaba	Acctt	9300-34800/-	4200	14840
5.	Mrs. R. Asangla	Acctt	9300-34800/-	4200	14840
6.	Mrs. Hotoli	SAA	9300-34800/-	4200	14810
7.	Mrs. Tiakala	SAA	5200-20200/-	2800	12470
8.	Mrs. T. Asangla	SAA	5200-20200/-	2800	11720
9.	Mrs. L. Atula	SAA	5200-20200/-	2800	11460
10.	Mr. Longchatongba	SAA	5200-20200/-	2800	11460
11.	Mrs. Lipokla	SAA	5200-20200/-	2800	11200
12.	Mrs. Catherine	SAA	5200-20200/-	2800	10710
13.	Mr. Rongsen	JAA	5200-20200/-	2800	10560
14.	Mr. Asangba	JAA	5200-20200/-	2800	10200
15.	Mrs. Tiarenla	JAA	5200-20200/-	2800	10200
16.	Mrs. Asangla Wati	JAA	5200-20200/-	2800	10200
17.	Mr. Vilakuo	JAA	5200-20200/-	2800	10010
18.	Mr. Kihovi	JAA	5200-20200/-	2000	9980
19.	Mrs. Vihuli	JAA	5200-20200/-	2800	9850
20.	Mrs. Yashimenla	JAA	5200-20200/-	2000	8270
21.	Mr. Albert Merry	JAA	5200-20200/-	2000	8270

22.	Mr. Kekhrieselie	JAA	5200-20200/-	2000	7920
23.	Mrs. M. Akala	Typist	5200-20200/-	1900	9530
24.	Mrs. Arensangla	Typist	5200-20200/-	1900	7770
25.	Mrs. Aomakla	SAA	5200-20200/-	2800	11200
26.	Mr. S. Ayangba	R.K.	5200-20200/-	1900	8550
27.	Mr. Khekito	JAA	5200-20200/-	2800	10180
28.	Mr. Kumsang	Sr.Driver	5200-20200/-	2400	10000
29.	Mr. Virie	Duftry	5200-20200/-	1800	7910
30	Mr. Taongnukshi	Peon	4400-17200/-	1400	6670
31	Mr. Imyachetba	Peon	4400-17200/-	1400	6040
32	Mr. Jongpongmar	Peon	4400-17200/-	1300	4940
33	Mrs. Narola	Sweeper	4400-17200/-	1300	4940
34	Mr. Talikaba	Peon	5200-20200/-	1800	7620
35	Mr. Sorho	Chowkidar	4400-17200/-	1300	5670
36	Smti I. Rosy Thonger	J.A.A	5200-20200	2000	8200
37	Smti Holi Sumi	J.A.A	5200-20200	2000	8200
38	Smti. Tamanila Jamir	J.A.A	5200-20200	2000	7960

NAME OF OFFICE : MOKOKCHUNG TREASURY

SI No.	Name	Designation	Pay Band	Basic Pay	Basic Pay
(1)	(2)	(3)	(4)	(5)	(6)
1.	Ms. Alemla Aier	Sr.T.O.	15600-39100/-	6600	22140
2.	Mrs. Atila Longkumer	S.T.O.	9300-34800/-	4600	20020
3.	Mrs. Limasangla	Acctt.	9300-34800/-	4200	19040
4.	Mrs. Bendangtola	Acctt.	9300-34800/-	4200	19040
5.	Mrs. Pangjungla	S.A.A.	5200-20200/-	2800	15780
6.	Mrs. Berlin	S.A.A.	5200-20200/-	2800	15280
7.	Mr. Longriniken	S.A.A.	5200-20200/-	2800	15280
8.	Mrs. Lanuinla	S.A.A.	5200-20200/-	2800	15280
9.	Mrs. Y. Achila	S.A.A.	5200-20200/-	2800	14000
10.	Mr. Inchanochet	S.A.A.	5200-20200/-	2800	14000
11.	Mrs. Talinungla	S.A.A.	5200-20200/-	2800	14000
12.	Mr. Limatoshi	S.A.A.	5200-20200/-	2800	13170
13.	Mr. Sashilamba	J.A.A.	5200-20200/-	2000	11630
14.	Mrs. Sentirenla	J.A.A.	5200-20200/-	2000	10270
15.	Mr. Lanusunup	J.A.A.	5200-20200/-	2000	10270
16.	Mrs. Bendangtila	J.A.A.	5200-20200/-	2000	9920
17.	Mrs. Alamkokla	J.A.A.	5200-20200/-	2000	9580
18.	Ms. Marmongla	JAA	5200-20200/-	2000	9050
19.	Mr. Chubasashi	Driver	5200-20200/-	2400	11580
20.	Mrs. Tekarenla	Typist	5200-20200/-	1900	11480
21.	Mr. M. Asongla	R.K.	5200-20200/-	1900	11100
22.	Mr. Nungshilemba	Duftry	5200-20200/-	1800	9860
23	Mrs. Purnungla	Sweeper	5200-20200/-	1800	9710
24	Mr. I. Noksang	Chowkidar	5200-20200/-	1800	9570
25	Mrs. Temsuchila	Peon	4000-17200/-	1800	9420

26	Mr. S.R.Temsu	Peon	4000-17200/-	1400	8620
27	Mr. Nokjenmeren	Peon	4000-17200/-	1400	8620
28	Mrs. Merenlila	Peon	4000-17200/-	1400	8080
29	Ms. Alemla Aier	Sr.T.O.	15600-39100/-	6600	22140
30	Mr. Imlisumkum Jamir	J.A.A	5200-20200	2000	8200

NAME OF OFFICE : TRAINING COMPLEX

SI No.	Name	Designation	Pay Band	Grade Pay	Basic Pay
(1)	(2)	(3)	(4)	(5)	(6)
1	Mr. P.Yilobemo Lotha	Jt. Director	15600-39100/-	7600	36990
2	Mrs.Temsuinla Aier	Asstt.Director	9300-34800/-	4600	15280
3	Mr. P.R.Lohta	S.A.A.	5200-20200/-	4200	14850
4	Mr. Lahoto Aye	S.A.A.	5200-20200/-	4200	13500
5	Mrs. Tiala Edel	S.A.A.	5200-20200/-	2800	11700
6	Mrs. Rongsenlemla	S.A.A.	5200-20200/-	2800	11460
7	Mrs. K. Alemla	S.A.A.	5200-20200/-	2800	11460
8	Mrs. Inali	U.D.A.	5200-20200/-	2800	10700
9	Mrs. Merensangla	L.D.A.	5200-20200/-	2000	7920
10	Mrs. Veselu	J.A.A.	5200-20200/-	2000	10330
11	Mrs. Alemchenla	J.A.A.	5200-20200/-	2000	8270
12	Mr. S. Mar	Driver	4400-17200/-	2000	10600
13	Mr. Pangai	Peon	4400-17200/-	1300	6400
14	Mrs. Kuholi	Peon	4400-17200/-	1300	4940

NAME OF OFFICE : WOKHA TREASURY

SI No.	Name	Designation	Pay Band	Grade Pay	Basic Pay
(1)	(2)	(3)	(4)	(5)	(6)
1	Mr.R.N.Yanthan	Sr.T.O	15600-39100	6600	25580
2	Athungo	S.T.O	9300-34800	4200	19040
3	Mr. Zanao	Acctt	9300-34800	4200	19040
4	Mr. Zumchio	Acctt	9300-34800	4200	19040
5	Mr. Abemo kikon	SAA	5200-20200	2800	15530
6	Mr. W.Eluthung	SAA	5200-20200	2800	15020
7	Mr. Yidemo	SAA	5200-20200	2800	15020
8	Mr. Oren Kithan	SAA	5200-20200	2800	15020
9	Mr. Wosemo	SAA	5200-20200	2800	14520
10	Mr. R. Abemo	JAA	5200-20200	2800	13240
11	Mrs. Yisanbeni	JAA	5200-20200	2800	13240
12	Mr. Damaris	JAA	5200-20200	2000	10270
13	Mrs. L. Abeni	JAA	5200-20200	2000	9580
14	Mrs. Oreno	JAA	5200-20200	2000	9050
15	Mrs. Yilano	Typist	5200-20200	2000	12960
16	Mr. Nchumongi	R/K	5200-20200	1900	11100

17	Mr. Monahahit	Driver	5200-20200	2400	11580
18	Mr. Anyimo	Duftry	5200-20200	1800	10780
19	Mr. Zubemo	Peon	5200-20200	1800	9290
20	Mrs. Nrichoni	Sweeper	5200-20200	1800	9420
21	Mr. Nyintsemo	Chowkidar	4400-17200	1400	8350
22	Mr. Yibemo	Peon	4400-17200	1400	8570
23	Mr. Mhabemo	Peon	4400-17200	1300	6630
24	Shri Benjamin Ngullie	J.A.A	5200-20200	2000	8200

NAME OF OFFICE : TUENSANG TREASURY

SI No.	Name	Designation	Pay Band	Grade Pay	Basic Pay
(1)	(2)	(3)	(4)	(5)	(6)
1.	Mr.M.V.Chishi	Sr.T.O.	15600-39100/-	6600	26650
2.	Mr.W.Chnigmak	S.T.O.	9300-34800/-	4600	20980
3.	Mr. Nzanbemo	Acctt.	9300-34800/-	4200	18430
4.	Mr. N.C.Chang	S.A.A.	5200-20200/-	2800	17050
5.	Mr. I.N.Chang	S.A.A.	5200-20200/-	2800	17050
6.	Mr. Thungcheo	S.A.A.	5200-20200/-	2800	14520
7.	Mr. Hopong	S.A.A.	5200-20200/-	2800	14260
8.	Mrs. Amenla	S.A.A.	5200-20200/-	2800	14260
9.	Mr. Ramji	J.A.A.	5200-20200/-	2000	11290
10.	Mrs. Rongsenpokla	J.A.A.	5200-20200/-	2000	10090
11.	Mr. Onenmar	J.A.A.	5200-20200/-	2000	9920
12.	Mrs. Sotsela	J.A.A.	5200-20200/-	2000	9920
13.	Mr. Lanutoshi Chang	J.A.A.	5200-20200/-	2000	9750
14.	Mrs. Lijungla	Typist	5200-20200/-	1900	11430
15.	Mr. B.Imliba	Driver	5200-20200/-	2400	13000
16.	Mr. Watimongba	R.K.	5200-20200/-	1900	11100
17.	Mr. Mukam	Chowkidar	5200-20200/-	1800	10630
18.	Mr. A.Chingmak	Duftry	5200-20200/-	1800	9860
19.	Mr. Chumi	Sweeper	5200-20200/-	1800	9860
20.	Mr. Imtitemsu	Peon	5200-20200/-	1800	9570
21.	Mr. Yongkongkelep	Peon	4000-17200/-	1400	8220
22.	Mr. C. Bemomongba	Peon	4000-17200/-	1300	6240
23.	Shri I. Ngakusomba	J.A.A	5200-20200	2000	8200
24.	Shri. H. Imkong Chang	J.A.A	5200-20200	2000	7960
25.	Shri. Lijungla	Typist	5200-20200	2000	11830
26.	Shri. Watimongba	Record Keeper	5200-20200	1800	11110
27.	Shri. Imliba	Driver Gr-I	5200-20200	2400	13200
28.	Shri.Lepise	Duftry	5200-20200	1900	11780
29.	Shri. Chingmak	Peon	5200-20200	1800	9150
30.	Shri. Intitemse	Peon	5200-20200	1800	9010
31.	Shri. Yongkong	Peon	4400-17200	1400	8320
32.	Shri. Makum	Chowkidar	5200-20200	1800	10640
33.	Shri. Chumi	Sweeper	5200-20200	1800	9150

NAME OF OFFICE : PHEK TREASURY

SI No.	Name	Designation	Pay Band	Grade Pay	Basic Pay
(1)	(2)	(3)	(4)	(5)	(6)
1	O.Imliwati	T.O.	15600-39100	5700	28840
2	Neitsietunuo	S.T.O	9300-34800	4200	18480
3	Kevetsoyi	S.A.A	5200-20200	2800	14690
4	Khoto	J.A.A	5200-20200	2000	9920
5	Vekhotolu	J.A.A	5200-20200	2000	9920
6	Puchove	Peon	4400-17200	1400	9010
7	Khosepalu	Chowkidar	4400-17200	1400	9010
8	Shri. Oren Kithan	S.A.A	5200-20200	2800	15210
9	Shri. Sevoto Rakho	S.A.A	5200-20200	2800	14690
10	Shri.Diewe Mero	S.A.A	5200-20200	2800	14690
11	Smti. Vekhotolu Rhakho	J.A.A	5200-20200	2000	8980
12	Shri. Ngupe kronu	J.A.A	5200-20200	2000	8980
13	Shri. Kekhrievotuo	J.A.A	5200-20200	2000	8980
14	Shri Tsiatsusie	J.A.A	5200-20200	2000	8200
15	Shri Kache Kapfo	J.A.A	5200-20200	2000	8200
16	Shri. Shetseita	Driver	5200-20200	2400	13390
17	Shri. P. Nyanthung	Record Keeper	5200-20200	1800	10940
18	Shri. Ciefuveyi	Duftry	4400-17200	1400	9010
19	Shri. Vevozo Lohe	Peon	4400-17200	1400	8068
20	Shri. Ouchove lohe	Peon	4400-17200	1400	7810
21	Shri. Nusakholu	Peon	4400-17200	1400	7690
22	Shri. Fuhu	Chowkidar	4400-17200	1400	9010
23	Smti. Neiteü	Sweeper	4400-17200	1400	8060

NAME OF OFFICE : KIPHIRE TREASURY

SI No.	Name	Designation	Pay Band	Grade Pay	Basic Pay
(1)	(2)	(3)	(4)	(5)	(6)
1.	Mr.Vukhuhe Sema	T.O. (U.S)	9300-34800/-	5700	22840
2.	Shri. Taka Chang	S.T.O	9300-34800/-	4400	20050
3.	Mr. T.Shilu Sangtam	Acctt.	9300-34800/-	4200	19010
4.	Mr. Y. Lhozhei Sema	S.A.A.	5200-20200/-	2800	15530
5.	Mr. Z.Vighoto Sumi	S.A.A.	5200-20200/-	2800	13510
6.	Ms. Shanti Gurung	J.A.A.	5200-20200/-	2800	12670
7.	Mr. Lipokmeren Lkr.	J.A.A.	5200-20200/-	2000	10270
8.	Mr. Y. Malem Chang	J.A.A.	5200-20200/-	2000	9750
9.	Mr. Lichumse Sangtam	J.A.A.	5200-20200/-	2000	8890
10	Mrs. Tsathrila Sangtam	Typist	5200-20200/-	2000	12170
11	Mr. Chohtrogli Sangtam	Peon	5200-20200/-	1800	9860
12	Mr. Serichum Sangtam	Peon	4400-17200/-	1300	7580

13	Mr. Litsao Sangtam	Sweeper	4400-17200/-	1800	9420
14	Mr. S. Among Yimchunger	Chowkidar	4400-17200/-	1300	7210
15	Mrs. Tsathrila Sangtam	J.A.A	5200-20200	2000	7960

NAME OF OFFICE : PEREN TREASURY

Sl. No.	Name	Designation	Pay Band	Grade Pay	Basic Pay
(1)	(2)	(3)	(4)	(5)	(6)
1.	Mr. K.Talimoa Jamir	Sr.T.O.	15600-39100/-	6600	23560
2.	Mr.Leo Elungung	Acctt.	9300-34800/-	4200	19010
3.	Mr. Apui	S.A.A.	5200-20200/-	2800	16550
4.	Ms. Lailai	S.A.A.	5200-20200/-	2800	15020
5.	Ms.Igumlungle	S.A.A.	5200-20200/-	2800	14520
6.	Ms. Imkonglila	J.A.A.	5200-20200/-	2800	12980
7.	Ms. Sungjemmenla	J.A.A.	5200-20200/-	2800	10270
8.	Ms. N.Loreni	J.A.A.	5200-20200/-	2800	9580
9.	Ms. Ayula	Typist	5200-20200/-	1900	11430
10.	Mr. Zausamku	Peon	5200-20200/-	1800	9710
11.	Ms.Lungchuheile	Sweeper	5200-20200/-	1800	9570
12.	Mr. Rangteirrai Herie	Peon	4400-17200/-	1300	7100
13.	Mr. Ala sephe	Chowkidar	4400-17200/-	1300	6840
14.	Mr. Modongalu	J.A.A	5200-20200	2000	8200
15.	Shri Perangteipetpe	J.A.A	5200-20200	2000	8200

NAME OF OFFICE : LONGLENG TREASURY

Sl. No.	Name	Designation	Pay Band	Grade Pay	Basic Pay
(1)	(2)	(3)	(4)	(5)	(6)
1	Shri, L. Mongtho Phom	STO	9300-34800/-	4600	21740
2	Mr. A.Z.Meren	SAA	5200-20200/-	4200	19300
3	Mr. A. Lemba	SAA	5200-20200/-		
4	Mr. A.Ponglong	JAA	5200-20200/-	2800	16050
5	Mr. Samson Singsit	JAA	5200-20200/-	2800	14170
8	Ms.Jepong	Potdar	5200-20200/-		
9	Shri Hongching Phom	J.A.A	5200-20200	2000	8200
10	Shri. Nganglong Phom	J.A.A	5200-20200	2000	7960
11	S. Bangei	Typist	5200-20200	2000	11830
12	B. Baulom	Potdar	5200-20200	1900	11110
13	Shri. A. Leinak	Peon	4400-17200	1300	7320
14	B. Longnyei	Peon	5200-20200	1800	9010
15	S. Lamchi	Chowkidar	5200-20200	1800	9010
16	Manla	Sweeper	5200-20200	1800	8870
17	Pangnok	Driver	5200-20200	2400	11310

NAME OF OFFICE : PFUTSERO SUB-TREASURY

Sl No.	Name	Designation	Pay Band	Grade Pay	Basic Pay
(1)	(2)	(3)	(4)	(5)	(6)
1.	Mr. K.Mero	Sr.T.O.	15600-39100/-	5700	20050
2.	Mrs. Kenikhwele	SAA	5200-20200/-	2800	14530
3.	Mr. Wezote	SAA	5200-20200/-	2800	12850
4.	Mr. Seveto Rhakho	SAA	5200-20200/-	2800	14090
5.	Mrs. Vetolu	Typist	5200-20200/-	2800	11690
6.	Mrs. Wetele (U/S)	JAA (U/S)	5200-20200/-	1800	3548
7.	Mr. Ngulo	Potdar (U/S)	5200-20200/-	1800	3181
8.	Mr. Tsütshowelo	Peon	5200-20200/-	1800	9710
9.	Mr. Zühürayi	Chowkidar	5200-20200/-	1800	9710
10.	Mr. Mesewete	Peon	4400-17200/-	1300	6430
11.	Mr. Zeweto	Sweeper	5200-20200/-	1800	9710
12.	Shri Zurasie	J.A.A	5200-20200	2000	8200
13.	Shri. Athili Louis	J.A.A	5200-20200	2000	7960

NAME OF OFFICE : CHOZUBA SUB-TREASURY

Sl. No.	Name	Designation	Pay Band	Grade Pay	Basic Pay
(1)	(2)	(3)	(4)	(5)	(6)
1.	Mr.Rudahuyi Sazo	STO	9300-34800/-	4600	19480
2.	Mr. Vilatsol Kenao	SAA	5200-20200/-	2800	14520
3.	Ms. Vesanulu Dozo	SAA	5200-20200/-	2800	14260
4.	Mr. Tehethiyi Kezo	JAA	5200-20200/-	2000	10270
5.	Mr. Nchumbemo	JAA	5200-20200/-	2000	9920
6.	Mr. Chubawati	JAA	5200-20200/-	2000	10090
7.	Ms. Kethoseno Solo	Typist	5200-20200/-	1900	9670
8.	Mr. Maga Kezo	Potdar	5200-20200/-	1800	10630
9.	Mr. Pusanu Lohe	Driver	5200-20200/-	1800	8860
10.	Mr. Zacipol Lohe	Peon	4400-17200/-	1300	7700
11.	Mr. Mudonuyi Ringa	Peon	4400-17200/-	1300	7700
12.	Mr. Veprazo Vadeo	Peon	4400-17200/-	1300	7580
13.	Mr.Chekhwuzu ringa	Chowkidar	4400-17200/-	1300	7700
14.	Ms. Nyiku-o Khesoh	Sweeper	4400-17200/-	1300	7700

NAME OF OFFICE : ABOI SUB-TREASURY

Sl. No.	Name	Designation	Pay Band	Grade Pay	Basic Pay
(1)	(2)	(3)	(4)	(5)	(6)
1.	Mr. Leangin Konyak	S.T.O.	9300-34800/-	4600	15960
2.	Mt. T. Thunjamo Lotha	S.A.A.	5200-20200/-	2800	12160

3.	Ms. Libeni	S.A.A.	5200-20200/-	2800	11890
4.	Mrs. Ganga Sonwal	S.A.A.	5200-20200/-	2800	10840
5.	Mr. A.Wingnyi Konyak	J.A.A.	5200-20200/-	2000	8580
6.	Mr. N.Hamloi Konyak	J.A.A.	5200-20200/-	2000	7870
7.	Mr. Seyiesituo Angami	J.A.A.	5200-20200/-	2000	7160
8.	Mrs.Yeilonk Konyak	J.A.A.	5200-20200/-	2000	6450
9.	Mrs.Eliiyani Lotha	Typist	5200-20200/-	1900	8530
10	Mr. Shamlu Konyak	Potdar	5200-20200/-	1800	9630
11	Mr. Phulao Konyak	Potdar	5200-20200/-	1800	8360
12	Mr. Angnyi Konyak	Peon	5200-20200/-	1800	7910
13	Mr. Pangtok Konyak	Sweeper	5200-20200/-	1800	7910
14	Mr. W.Ato konyak	Peon	4400-17200/-	1400	7210
15	Mr. Wanmei Konyak	Peon	4400-17200/-	1300	6640
16	Mr. Bemang Konyak	Peon	4400-17200/-	1300	6640
17	Mr.Nyangnyu Konyak	Sweeper	4400-17200/-	1300	6640
18	Mr. Lhangti Konyak	Peon	4400-17200/-	1300	6640
19	Mr. C.Khonney Konyak	Peon	4400-17200/-	1300	6640
20	Shri. Tingnon Konyak	J.A.A.	5200-20200	2000	7960
21	Chuba Ao	Driver(Fixed)	Fixed Pay		3000
22	Shri. Wangkhao	N/Chowkidar	Fixed Pay		2000

NAME OF OFFICE : BAGHTY SUB-TREASURY

Sl. No.	Name	Designation	Pay Band	Grade Pay	Basic Pay
(1)	(2)	(3)	(4)	(5)	(6)
1.	Mrs. Nzanbeni	S.T.O.	9300-34800/-	4600	20290
2.	Mr. Mhonthung	S.A.A.	5200-20200/-	2800	15530
3.	Mr. Chumthungo	S.A.A.	5200-20200/-	2800	15020
4.	Mr. Mhabemo	S.A.A.	5200-20200/-	2800	14520
5.	Mr. Nyimbemo	J.A.A.	5200-20200/-	2000	10270
6.	Mrs. Zubeni	Typist	5200-20200/-	1900	11430
7.	Mr. Stephen	Potdar	5200-20200/-	1900	11100
8.	Mr. Rentsamo	Chowkidar	5200-20200/-	1800	9420
9.	Mr. Shidamo	Sweeper	5200-20200/-	1800	9290
10.	Mrs. Thungchano	Peon	4400-17200/-	1300	7580
11.	Mr. Wopenthung	Peon	4400-17200/-	1300	6430
12.	Shri E. Pithungo Lotha	J.A.A	5200-20200	2000	8200
13	Mhao Murry	Driver	Fixed Pay		6000

NAME OF OFFICE : MANGKOLEMBA SUB-TREASURY

Sl. No.	Name	Designation	Pay Band	Grade Pay	Basic Pay
(1)	(2)	(3)	(4)	(5)	(6)
1.	Mr. T.Yanger Jamir	STO	6500-175-9000/-	ROP-1999	7550
2.	Mrs. Chubalemla	SAA	5200-20200/-	2800	15530

3.	Mr. Aosashi	SAA	5200-20200/-	2800	14260
4.	Mr. Tiameren	SAA	5200-20200/-	2800	14000
5.	Mr. Chubawati	SAA	5200-20200/-	2800	14000
6.	Mrs. Takusangla	JAA	5200-20200/-	2000	9050
7.	Mrs. Asangla	Typist	5200-20200/-	1900	11430
8.	Mr. Tekaluba	Potdar	5200-20200/-	1900	11580
9.	Mr. Wangshirenba	Peon	5200-20200/-	1800	9420
10.	Mr. Nungshilepzuk	Chowkidar	5200-20200/-	1800	9420
11.	Mr. Bendangsashi	Peon	4400-20200/-	1400	8610
12.	Mrs. Tekanungla	Sweeper	5200-20200/-	1800	9570
13.	Shri Imtituba	J.A.A	5200-20200	2000	8200

NAME OF OFFICE : CHANGTONGYA SUB-TREASURY

Sl. No.	Name	Designation	Pay Band	Grade Pay	Basic Pay
(1)	(2)	(3)	(4)	(5)	(6)
1.	Mr.Toshi zemba	S.T.O.	9300-34800/-	4600	22330
2.	Mr. Nchumbemo	S.A.A.	5200-20200/-	2800	14520
3.	Mr. Noklemba	S.A.A.	5200-20200/-	2800	14260
4.	Mrs. Lanulila	S.A.A.	5200-20200/-	2800	13510
5.	Mrs. Temsola	J.A.A.	5200-20200/-	2800	13240
6.	Mrs. T. Arenla	J.A.A.	5200-20200/-	2000	11480
7.	Mrs. Temsulinla	J.A.A.	5200-20200/-	2000	9580
8.	Mrs. Takolila	Typist	5200-20200/-	1900	11430
9.	Mr. Ngangshijenba	Potdar	5200-20200/-	2000	12330
10.	Mr.M.Olem	Peon	5200-20200/-	1800	10470
11.	Mr. L. Shilu	Peon	5200-20200/-	1800	10020
12.	Mr. Merinoknen	Chowkidar	4400-17200/-	1300	7580
13.	Mrs. Imnanenla	Sweeper	4400-17200/-	1300	7460
14.	Mr. Alemyanger Lkr.	J.A.A	5200-20200	2000	8200
15.	Shri. Bendang	Driver	Fixed Pay		3000

NAME OF OFFICE : TSEMINYU SUB-TREASURY

Sl. No.	Name	Designation	Pay Band	Grade Pay	Basic Pay
(1)	(2)	(3)	(4)	(5)	(6)
1.	Mr.T. Thungalee	T.O.	15600-39100/-	5400	19870
2.	Mr.Nyanbemo	S.A.A.	5200-20200/-	2800	14520
3.	Mr. R.Wonimo	S.A.A.	5200-20200/-	2800	14520
4.	Mr. Mezhari	S.A.A.	5200-20200/-	2800	14000
5.	Mr.Christopher	S.A.A.	5200-20200/-	2800	13510
6.	Ms. Alemla	J.A.A	5200-20200/-	2000	10090
7.	Ms.Tsenzulo	Typist	5200-20200/-	1900	11430
8.	Mr. John	Potdar	5200-20200/-	1800	10630
9.	Mr. Kedanye	Peon	5200-20200/-	1800	9860
10.	Mr.Shwenhelo	Chowkidar	5200-20200/-	1800	9420

11	Ms.Hilole	Sweeper	5200-20200/-	1800	9710
12	Mr. Gwakenye	Peon	4400-17200/-	1300	7100
13	Shri Kikon khatso	J.A.A	5200-20200	2000	8200
14	Shri. Min Bahadur	Driver	Fixed pay		3000

NAME OF OFFICE: AGHUNATO SUB-TREASURY

Sl. No.	Name	Designation	Scale of Pay	Basic Pay	Basic Pay
(1)	(2)	(3)	(4)	(5)	(6)
1.	Mr. Ghokhevi	S.T.O.	9300-34800/-	4600	16500
2.	Mr.Viniho	S.A.A.	5200-20200/-	2800	15780
3.	Mr. Samuel	S.A.A.	5200-20200/-	2800	14260
4.	Mr. Vinoto	J.A.A.	5200-20200/-	1800	8810
5.	Mr. Ikheto	Typist	5200-20200/-	1900	11430
6.	Mr. Vihizhe	Peon	5200-20200/-	1800	9860
7.	Mr. Dohekhu	Sweeper	5200-20200/-	1800	9710
8.	Mr. Ghokhevi	Peon	5200-20200/-	1800	9420
9.	Mr. Mughasheto	Chowkidar	5200-20200/-	1300	7340
10.	Mr. Jesse	Potdar	5200-20200/-	1800	7720

Manual – XI

(xi) The budget allocated to each of its agency, indicating the particulars of all plans, proposed expenditure and reports on disbursements made:

Demand No. 12: Department of Treasuries & Accounts: Final Expenditure of 2011-12:

(Rs. in lakhs)

Head of Account	Plan	Non-Plan	Expenditure		Total	(- Saving)
	RE	RE	Plan	Non-Plan		(+ Excess)
Revenue Section Major Head:2054 Treasury and Accounts Administration						
2054-00-003-Training						
Salaries		4520000		4350246	4350246	169754
Wages		732000		714033	714033	17967
Travel Expenses		95000		94874	94874	126
Office Expenses		1064000		1063448	1063448	552
Motor vehicles		80000		79807	79807	193
Rent,Rates & Taxes		60000		39652	39652	20348
Training Program		500000		500000	500000	0
TOTAL -(003)	0.00	7051000	0.00	6842060	6842060	208940
2054-00-095- Directorate of Accounts & Accounts						
Salaries		42513000		42477939	42477939	35061
Wages		2247000		2115413	2115413	131587
Travel Expenses		2255000		2254909	2254909	91

Office Expenses	10000000	12936000	10000000	12931473	22931473	4527
Motor vehicles	8600000	3203000	8590000	3168745	11758745	44255
Rent,Rates & Taxes		379000		253450	253450	125550
Maintenance (Minor Works)		10100000		10092821	10092821	7179
System improvement in Fin.Dept.		4200000		4199935	4199935	65
Machinery & Equipment		1000000		996866	996866	3134
Computerisation	1000000	2000000	1000000	1997873	2997873	2127
Remittance		126000		0		126000
Training Programme		500000		499538	499538	462
New Pension Scheme		1000000		999000	999000	1000
E & P Database (XIII FC Awards)		25000000		25000000	25000000	0
TOTAL-(095)	19600000	107459000	19590000	106987962	126577962	481038
2054-00-097 -Treasury Establishment						
1. Kohima (North) Treasury						
Salaries		8990000		9028517	9028517	-38517
Wages		38000		37800	37800	200
Travel Expenses		105000		104930	104930	70
Office Expenses						0
Motor vehicles		95000		94080	94080	920
Rent,Rates & Taxes		25000				25000
Remittance carriage charges						0
TOTAL -(097)		9253000		9265327	9265327	-12327
2054-00-097 -Treasury Establishment						
2. Kohima (South) Treasury						
Salaries		8870000		8732223	8732223	137777
Wages		44000		43500	43500	500
Travel Expenses		105000		105000	105000	0
Office Expenses						0
Motor vehicles		60000		59080	59080	920
Rent,Rates & Taxes		367000		352906	352906	14094
Remittance carriage charges						0
TOTAL		9446000		9292709	9292709	153291
2054-00-097 -Treasury Establishment						
3. Dimapur Treasury						
Salaries		9750000		9581479	9581479	168521
Wages						0
Travel Expenses		120000		119893	119893	107
Office Expenses						0
Motor vehicles		80000		79698	79698	302
Rent,Rates & Taxes		35000		35082	35082	-82
Remittance carriage charges						0
TOTAL		9985000		9816152	9816152	168848
2054-00-097 -Treasury Establishment						
4. Mokokchung Treasury						
Salaries		8710000		7608784	7608784	1101216
Wages						0
Travel Expenses		130000		145721	145721	-15721

Office Expenses						0
Motor vehicles		85000		84080	84080	920
Rent,Rates & Taxes		40000		38918	38918	1082
Remittance carriage charges						0
TOTAL		8965000		7877503	7877503	1087497
2054-00-097 -Treasury Establishment						
5. Tuensang Treasury						
Salaries		5830000		5823815	5823815	6185
Wages						0
Travel Expenses		140000		140000	140000	0
Office Expenses						0
Motor vehicles		80000		79080	79080	920
Rent,Rates & Taxes		10000		8245	8245	1755
Remittance carriage charges						0
TOTAL		6060000		6051140	6051140	8860
2054-00-097 -Treasury Establishment						
6. Mon Treasury						
Salaries		6850000		6856619	6856619	-6619
Wages						0
Travel Expenses		190000		189928	189928	72
Office Expenses						0
Motor vehicles		117000		115644	115644	1356
Rent,Rates & Taxes		20000		19132	19132	868
Remittance carriage charges						0
TOTAL		7177000		7181323	7181323	-4323
2054-00-097 -Treasury Establishment						
7. Zunheboto Treasury						
Salaries		6740000		6709130	6709130	30870
Wages						0
Travel Expenses		115000		114995	114995	5
Office Expenses						0
Motor vehicles		95000		94698	94698	302
Rent,Rates & Taxes		260000		259216	259216	784
Remittance carriage charges						0
TOTAL		7210000		7178039	7178039	31961
2054-00-097 -Treasury Establishment						
8. Phek Treasury						
Salaries		5300000		5251829	5251829	48171
Wages						0
Travel Expenses		170000		169992	169992	8
Office Expenses						0
Motor vehicles		85000		84080	84080	920
Rent,Rates & Taxes		20000		18756	18756	1244
Remittance carriage charges						0
TOTAL		5575000		5524657	5524657	50343
2054-00-097 -Treasury Establishment						
9. Wokha Treasury						
Salaries		6570000		6564102	6564102	5898

Wages						0
Travel Expenses		120000		119671	119671	329
Office Expenses						0
Motor vehicles		65000		67606	67606	-2606
Rent,Rates & Taxes		23000		22929	22929	71
Remittance carriage charges						0
TOTAL		6778000		6774308	6774308	3692
2054-00-097 -Treasury Establishment						
10. Peren Treasury						
Salaries		3750000		3696418	3696418	53582
Wages		38000		37800	37800	200
Travel Expenses		115000		114995	114995	5
Office Expenses						0
Motor vehicles		85000		84080	84080	920
Rent,Rates & Taxes		10000		7935	7935	2065
Remittance carriage charges						0
TOTAL		3998000		3941228	3941228	56772
2054-00-097 -Treasury Establishment						
11. Kiphire Treasury						
Salaries		3220000		3190229	3190229	29771
Wages		38000		38000	38000	0
Travel Expenses		120000		120000	120000	0
Office Expenses						0
Motor vehicles		85000		84080	84080	920
Rent,Rates & Taxes		30000		29211	29211	789
Remittance carriage charges						0
TOTAL		3493000		3461520	3461520	31480
2054-00-097 -Treasury Establishment						
12. Tsemniyu Sub-Treasury						
Salaries		3200000		3142377	3142377	57623
Wages		38000		36000	36000	2000
Travel Expenses		75000		74950	74950	50
Office Expenses						0
Motor vehicles		85000		84080	84080	920
Rent,Rates & Taxes		21000		13201	13201	7799
Remittance carriage charges		160000		144000	144000	16000
TOTAL		3579000		3494608	3494608	84392
2054-00-097 -Treasury Establishment						
13. Chozuba Sub-Treasury						
Salaries		3215000		3332208	3332208	-117208
Wages						0
Travel Expenses		80000		79998	79998	2
Office Expenses						0
Motor vehicles		85000		84080	84080	920
Rent,Rates & Taxes		180000		178439	178439	1561
Remittance carriage charges		170000		164400	164400	5600
TOTAL		3730000		3839125	3839125	-109125
2054-00-097 -Treasury Establishment						

14. Aboi Sub-Treasury						
Salaries		4580000		4561547	4561547	18453
Wages		65000		64800	64800	200
Travel Expenses		120000		120000	120000	0
Office Expenses						0
Motor vehicles		100000		99080	99080	920
Rent,Rates & Taxes		15000		7798	7798	7202
Remittance carriage charges		160000		144000	144000	16000
TOTAL		5040000		4997225	4997225	42775
2054-00-097 -Treasury Establishment						
15. Longleng Sub-Treasury						
Salaries		3190000		2731987	2731987	458013
Wages						0
Travel Expenses		135000		134757	134757	243
Office Expenses						0
Motor vehicles		85000		84080	84080	920
Rent,Rates & Taxes		20000		20272	20272	-272
Remittance carriage charges		384000		384000	384000	0
TOTAL		3814000		3355096	3355096	458904
2054-00-097 -Treasury Establishment						
16. Changtongya Sub-Treasury						
Salaries		4250000		3323876	3323876	926124
Wages		38000		37800	37800	200
Travel Expenses		80000		80004	80004	-4
Office Expenses						0
Motor vehicles		90000		89080	89080	920
Rent,Rates & Taxes		20000		8379	8379	11621
Remittance carriage charges		200000		176000	176000	24000
TOTAL		4678000		3715139	3715139	962861
2054-00-097 -Treasury Establishment						
17. Pfutesro Sub-Treasury						
Salaries		3350000		2673986	2673986	676014
Wages		38000		37800	37800	200
Travel Expenses		55000		54501	54501	499
Office Expenses						0
Motor vehicles		100000		99080	99080	920
Rent,Rates & Taxes		10000				10000
Remittance carriage charges						0
TOTAL		3553000		2865367	2865367	687633
2054-00-097 -Treasury Establishment						
18. Mangkolemba Sub-Treasury						
Salaries		3490000		3311084	3311084	178916
Wages						0
Travel Expenses		55000		55005	55005	-5
Office Expenses						0
Motor vehicles		85000		84080	84080	920
Rent,Rates & Taxes		10000				10000
Remittance carriage charges						0
TOTAL		3640000		3450169	3450169	189831

2054-00-097 -Treasury Establishment						
19. Baghty Sub-Treasury						
Salaries		3650000		3111291	3111291	538709
Wages		38000		37800	37800	200
Travel Expenses		65000		64793	64793	207
Office Expenses						0
Motor vehicles		85000		84080	84080	920
Rent,Rates & Taxes		10000				10000
Remittance carriage charges						0
TOTAL		3848000		3297964	3297964	550036
2054-00-097 -Treasury Establishment						
20. Aghunato Sub-Treasury						
Salaries		3000000		2930771	2930771	69229
Wages						0
Travel Expenses		55000		54311	54311	689
Office Expenses						0
Motor vehicles		17000		16564	16564	436
Rent,Rates & Taxes		10000				10000
Remittance carriage charges						0
TOTAL		3082000		3001646	3001646	80354
TOTAL - (097)		112904000		108380245	108380245	4523755
800 -Other Expenditure						
2054-00-800(1) - Audit	Fund provision & Expenditure clubbed under Direction & Admn.					
Salaries					0	0
Wages						0
Travel Expenses					0	0
Office Expenses						0
Motor vehicles						0
Rent,Rates & Taxes						0
TOTAL -(800(1))			0		0	0
TOTAL:MAJOR HEAD- 2054		227414000		222210267	222210267	5203733
Major Head-2030						
Stamps & Registration						
Stamp- Judicial		4000000		2458766	2458766	1541234
Stamp- Non-Judicial						0
Total: Major Head-2030		4000000		2458766	2458766	1541234
TOTAL:REVENUE SECTION	19600000	231414000	19590000	224669033	244259033	6754967

PLAN

CAPITAL SECTION						
Major Head- 4059- C.O on Public Works						
01-Office Building	29984000		29984000		29984000	0
051-Construction						
051(1)-Non-functional buldings						
Total:4059	29984000		29984000	0	29984000	0
Major Head-4216-C.O on Housing						
01-Govt. Residential buildings	7416000		7416000		7416000.00	0
106-Genral Pool Accommodation						
106(1)- Construction						
Total-4216	7416000		7416000		7416000	0
TOTAL (Capital): (4059+4216)	37400000		37400000	0	37400000	0
TOTAL (Revenue): (2054)	19600000		19590000	0	19590000	10000
GRAND TOTAL	57000000		56990000	0	56990000	10000

Over all Savings and excess Statement under Directorate of Treasuries & Accounts

Detail Sub-Heads	Budget Provision		Expenditure		Total	Savings/ Excess
	Plan	Non-Plan	Plan	Non-Plan		
Salaries		153538000		148990457	148990457	4547543
Wages		3354000		3200746	3200746	153254
Travel Expenses		4500000		4513227	4513227	-13227
Office Expenses	10000000	14000000	10000000	13994921	23994921	5079
Motor vehicles	8600000	4947000	8590000	4898962	13488962	58038
Rent,Rates & Taxes		1575000		1313521	1313521	261479
Maintenance (Minor Works)		10100000		10092821	10092821	7179
System improvement in Fin.Dept.		4200000		4199935	4199935	65
Machinery & Equipment		1000000		996866	996866	3134
Computerisation	1000000	2000000	1000000	1997873	2997873	2127
Remittance Charges		1200000		1012400	1012400	187600
E & P Database (XIII FC Awards)		25000000		25000000	25000000	0
Stamps		4000000		2458766	2458766	1541234
Training Programme		1000000		999538	999538	462
New Pension Scheme		1000000		999000	999000	1000
Constuction of Try. Off. Bldgs.	29984000		29984000		29984000.00	0
Constuction of residential Bldgs.	7416000		7416000		7416000.00	0
TOTAL-(095)	57000000	231414000	56990000	224669033	281659033	6754967

Manual-XII

(xii) The manner of execution of subsidy programmes, including the amounts allocated and the details of beneficiaries of such programmes:

The Department has no subsidy schemes.

Manual-XIII

(xiii) Particulars of recipients of concessions, permits or authorizations granted by it:

Not applicable.

Manual –XIV

(xiv). Details in respect of the information held by it, reduced in an electronic form:

The Treasuries, Accounts & Audit Service Rules, Annual Administrative Reports and incumbency list of employees.

Manual-XV

(xv). The particulars of facilities available to citizens for obtaining information, including the working hours of a library or reading room, if maintained for public use:

All information relating to the departments are available to the public during working hours. No library is maintained for public use. We have notice boards, reception counter etc by which the public could access information.

Manual-XVI

(xvi). The names, designations and particulars of the Public Information Officers:-

Sl. No.	Name	Designation	Other Particulars
1	Shri. Z. Mesen	Director Treasuries	Appellate Authority
2	Shri. Vesatso Tetseo	Joint Director	P.I.O.
3	Shri. Pushuzo	Registrar	A.P.I.O.
4	Smti. Yapangla	Sr. Treasury Officer, Kohima (South)	P.I.O.
5	Shri. Khevito Y. Chopi	Sr. Treasury Officer, Zunheboto.	P.I.O.
6	Shri. Lepden Amer	Sr. Treasury Officer, Kohima (North)	P.I.O.
7	Shri. Nthio Kithan	Treasury Officer, Mon.	P.I.O.
8	Smti. Allemla Aier	Sr. Treasury Officer, Mokokchung	P.I.O.
9	Shri. Hoshito	Sr. Treasury Officer, Dimapur.	P.I.O.
10.	Smti R. L.Yanthan	Sr. Treasury Officer, Wokha.	P.I.O.
11	Shri. M. Vehoto	Sr. Treasury Officer, Tuensang	P.I.O.
12	Shri. K. Talimoa Jamir	Sr. Treasury Officer, Peren.	P.I.O.
13	Shri. O. Imliwati	Treasury Officer, Phek.	P.I.O.
14	Shri. Vekhuhe Sema	Treasury Officer, Kiphire.	P.I.O.